

Black, White & Citrus



.....
A Free Project Sheet
.....
NOT FOR RESALE
.....



Quilt Design by Heidi Pridemore

Quilt 2

Skill Level: Advanced Beginner

 **Henry Glass & Co., Inc.**



[facebook](#)

Finished Quilt Size: 72" x 82"
49 West 37th Street, New York, NY 10018
tel: 212-686-5194 fax: 212-532-3525
Toll Free: 800-294-9495
www.henryglassfabrics.com

BLACK, WHITE & CITRUS Quilt 2

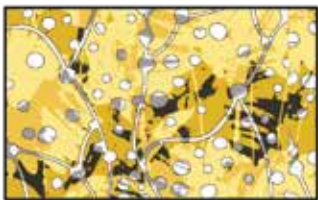
Fabrics in the Collection



Large Modern Floral - White/Yellow
2188-13



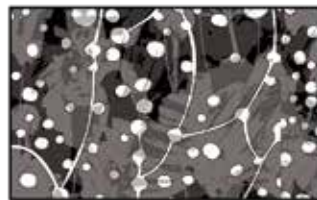
Large Modern Floral - Black/White
2188-19



Dot Vine Texture - Yellow
2189-33



Dot Vine Texture - Teal
2189-77



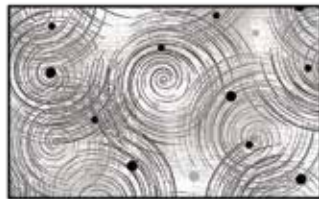
Dot Vine Texture
Black/Charcoal – 2189-91



Chevron Patch
White/Yellow Multi – 2190-13



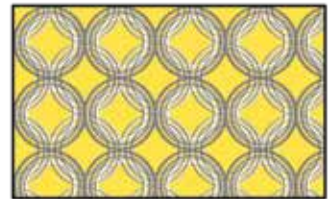
Chevron Patch
White/Teal Multi – 2190-17



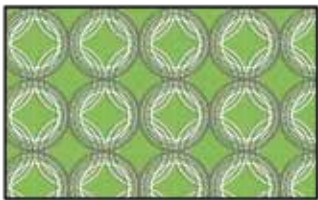
Swirl Texture
Black/Charcoal – 2191-91



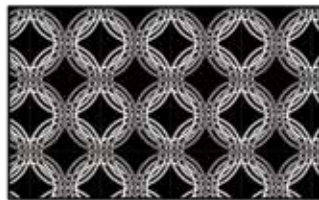
Swirl Texture
Black/Yellow Multi – 2191-93



Circle Link - Yellow
2192-33



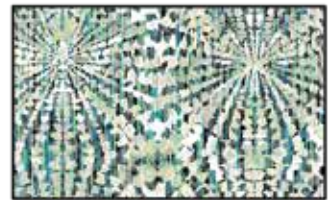
Circle Link - Apple Green
2192-66



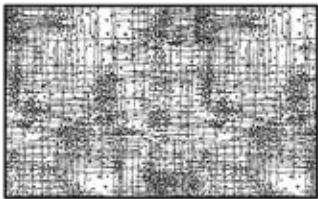
Circle Link - Black
2192-99



Starburst Texture
White/Yellow Multi – 2193-13



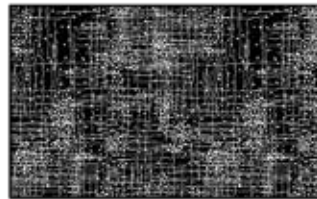
Starburst Texture
White/Teal Multi – 2193-17



Dotty Grid - White
2194-11



Dotty Grid - Yellow
2194-33

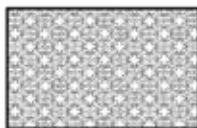


Dotty Grid - Black
2194-99

Select Fabric from Modern Melody Basics



Pigment White
1063-01W



White/Black
1063-09



Turquoise
1063-17



Marigold
1063-48



Silver Gray
1063-90



Black
1063-99

Materials

1 ⅛ yards	Dotty Grid - Yellow (A)	2194-33
½ yard	Modern Melody Basics - Silver Gray (B)	1063-90
¾ yard	Dot Vine Texture - Black/Charcoal (C)	2189-91
½ yard	Modern Melody Basics - Marigold (D)	1063-48
¾ yard	Circle Link - Yellow (E)	2192-33
1 ½ yards	Large Modern Floral - White/Yellow Multi (F)	2188-13
½ yard	Swirl Texture - Black/Yellow Multi (G)	2191-93
½ yard	Dot Vine Texture - Yellow (H)	2189-33
¾ yard	Chevron Patch - White/Yellow Multi (I)	2190-13
½ yard	Modern Melody Basics - White/Black (J)	1063-09
¾ yard	Swirl Texture - Black/Charcoal (K)	2191-91
¾ yard	Starburst Texture - White/Yellow Multi (L)	2193-13
¾ yard	Large Modern Floral - Black/White (M)	2188-19
½ yard	Dotty Grid - White (N)	2194-11
½ yard	Circle Link - Black (O)	2192-99
½ yard	Dotty Grid - Black (P)	2194-99
1 ¼ yards	Modern Melody Basics - Black (Q)	1063-99*
5 yards	Swirl Texture - Black/Yellow Multi (Backing)	2191-93

*Includes binding

Cutting Instructions

Please note: all strips are cut across the width of fabric (WOF) from selvage to selvage edge unless otherwise noted.

From the Dotty Grid - Yellow (A), cut:

- (1) 10 ½" x WOF strip. Sub-cut (7) 5 ½" x 10 ½" strips.
- (4) 5 ½" x WOF strips. Sub-cut (28) 5 ½" squares.

From the Modern Melody Basics - Silver Gray (B), cut:

- (2) 5 ½" x WOF strips. Sub-cut (14) 5 ½" squares.

From the Dot Vine Texture - Black/Charcoal (C), cut:

- (1) 10 ½" x WOF strip. Sub-cut (7) 5 ½" x 10 ½" strips.
- (2) 5 ½" x WOF strips. Sub-cut (14) 5 ½" squares.

From the Modern Melody Basics - Marigold (D), cut:

- (2) 5 ½" x WOF strips. Sub-cut (14) 5 ½" squares.

From the Circle Link - Yellow (E), cut:

- (2) 10 ½" x WOF strips. Sub-cut (14) 5 ½" x 10 ½" strips.

From the Large Modern Floral - White/Yellow Multi (F), cut:

- (2) 5 ½" x WOF strips. Sub-cut (14) 5 ½" squares.
- (4) 4 ½" x WOF strips. Sew the strips together end to end with diagonal seams and cut (2) 4 ½" x 74 ½" strips.
- (4) 4 ½" x WOF strips. Sew the strips together end to end with diagonal seams and cut (2) 4 ½" x 72 ½" strips.

From the Swirl Texture - Black/Yellow Multi (G), cut:

- (1) 10 ½" x WOF strip. Sub-cut (7) 5 ½" x 10 ½" strips.

From the Dot Vine Texture - Yellow (H), cut:

- (2) 5 ½" x WOF strips. Sub-cut (14) 5 ½" squares.

From the Chevron Patch - White/Yellow Multi (I), cut:

- (1) 10 ½" x WOF strip. Sub-cut (7) 5 ½" x 10 ½" strips.
- (2) 5 ½" x WOF strips. Sub-cut (14) 5 ½" squares.

From the Modern Melody Basics - White/Black (J), cut:

- (2) 5 ½" x WOF strips. Sub-cut (14) 5 ½" squares.

From the Swirl Texture - Black/Charcoal (K), cut:

- (2) 10 ½" x WOF strips. Sub-cut (14) 5 ½" x 10 ½" strips.

From the Starburst Texture - White/Yellow Multi (L), cut:

- (1) 10 ½" x WOF strip. Sub-cut (7) 5 ½" x 10 ½" strips.
- (2) 5 ½" x WOF strips. Sub-cut (14) 5 ½" squares.

From the Large Modern Floral - Black/White (M), cut:

- (1) 10 ½" x WOF strip. Sub-cut (7) 5 ½" x 10 ½" strips.
- (2) 5 ½" x WOF strips. Sub-cut (14) 5 ½" squares.

From the Dotty Grid - White (N), cut:

- (1) 10 ½" x WOF strip. Sub-cut (7) 5 ½" x 10 ½" strips.

From the Circle Link - Black (O), cut:

- (2) 5 ½" x WOF strips. Sub-cut (14) 5 ½" squares.

From the Dotty Grid - Black (P), cut:

- (1) 10 ½" x WOF strip. Sub-cut (7) 5 ½" x 10 ½" strips.

From the Modern Melody Basics - Black (Q), cut:

- (4) 2 ½" x WOF strips. Sew the strips together end to end with diagonal seams and cut (2) 2 ½" x 70 ½" strips.
- (4) 2 ½" x WOF strips. Sew the strips together end to end with diagonal seams and cut (2) 2 ½" x 64 ½" strips.
- (8) 2 ½" x WOF strips for the binding.

From the Swirl Texture - Black/Yellow Multi (Backing), cut:

- (2) 90" x WOF strips for the backing. Sew the strips together and trim to make the 80" x 90" back.

BLACK, WHITE & CITRUS

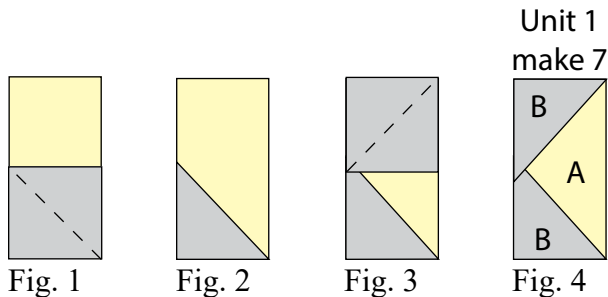
Quilt 2

Block Assembly

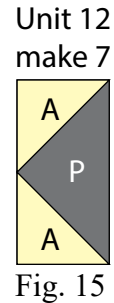
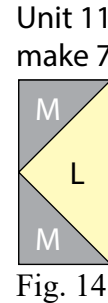
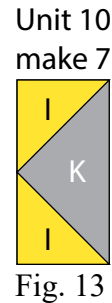
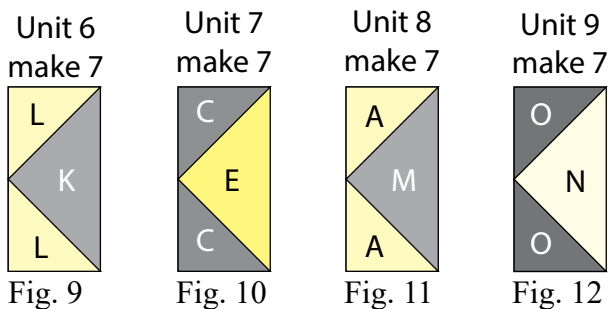
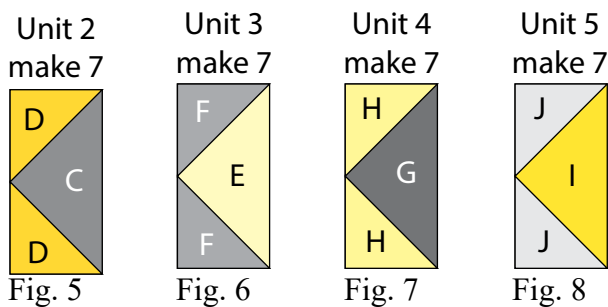
1. Place (1) 5 1/2" Fabric B square on the bottom half of (1) 5 1/2" x 10 1/2" Fabric A strip, right sides together (Fig. 1). Sew across the diagonal of the square from the upper left corner to the lower right corner (Fig. 1). Flip open the triangle formed and press (Fig. 2). Trim away the excess fabric from behind the triangle, leaving a 1/4" seam allowance.

2. Place another 5 1/2" Fabric B square on the top half of the 5 1/2" x 10 1/2" Fabric A strip, right sides together (Fig. 3). Sew across the diagonal of the square from the upper right corner to the lower left corner (Fig. 3). Flip open the triangle formed and press. Trim away the excess fabric from behind the triangle, leaving a 1/4" seam allowance to make (1) Unit 1 strip (Fig. 4).

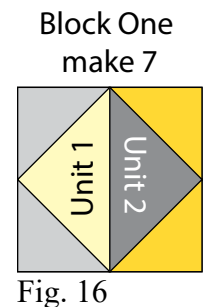
3. Repeat Steps 1-2 to make (7) Unit 1 strips total.



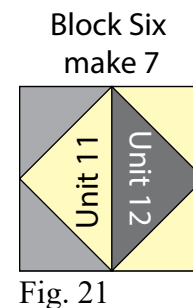
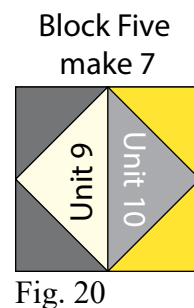
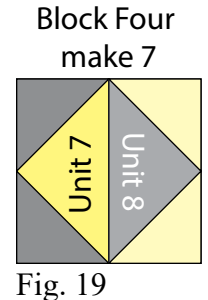
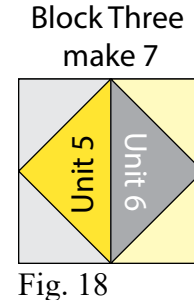
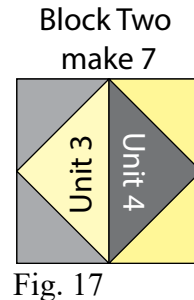
4. Repeat Steps 1-2 and use Figures 5-15 for fabric identification, location and seam direction to make (7) of each strip for Unit 2 through Unit 11.



5. Sew (1) Unit 1 strip and (1) Unit 2 strip together lengthwise to make (1) Block One square (Fig. 16). Repeat to make (7) Block One squares total.



6. Repeat Step 5 and use Figures 17-21 for unit identification, location and orientation to make (7) of each square for Block Two through Block Six.



Quilt Top Assembly

(Follow the Quilt Layout while assembling the quilt top.)

7. Sew (6) squares, Block One through Block Six, together in numerical order to make Row One.

8. Repeat Step 7 and use the quilt layout for Block location to make Rows Two through Seven.

9. Sew the (7) rows together, in numerical order, to make the Center Block.

BLACK, WHITE & CITRUS Quilt 2

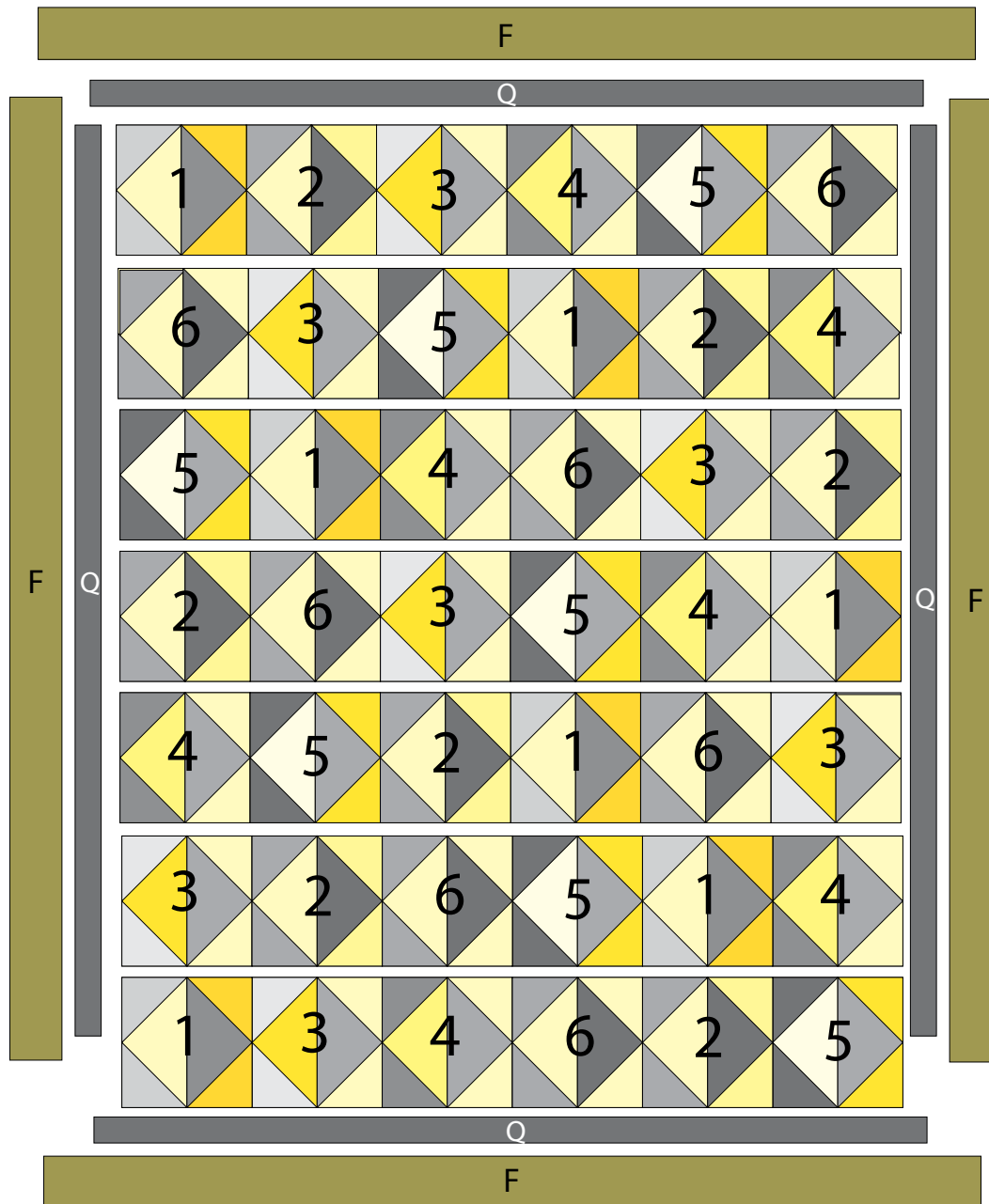
10. Sew (1) 2 ½" x 70 ½" Fabric Q strip to each side of the Center Block. Sew (1) 2 ½" x 64 ½" Fabric Q strip to the top and to the bottom of the Center Block.

11. Sew (1) 4 ½" x 74 ½" Fabric F strip to each side of the Center Block. Sew (1) 4 ½" x 72 ½" Fabric F strip to the top and to the bottom of the Center Block to make the quilt top.

12. Layer and quilt as desired.

13. Sew the (8) 2 ½" x WOF Fabric Q strips together, end to end with 45-degree seams, to make the binding. Fold this long strip in half lengthwise with wrong sides together and press.

14. Bind as desired.



Quilt Layout

Every effort has been made to ensure that all projects are error free. All the information is presented in good faith, however no warranty can be given nor results guaranteed as we have no control over the execution of instructions. Therefore, we assume no responsibility for the use of this information or damages that may occur as a result. When errors are brought to our attention, we make every effort to correct and post a revision as soon as possible. Please make sure to check www.henryglassfabrics.com for pattern updates prior to starting the project. We also recommend that you test the project prior to cutting for kits. Finally, all free projects are intended to remain free to you and are not for resale.