

Crochet Pattern

Long Stem Rose

Charts, Photos & Instructions



Natagor Finlayson

Crochet Long Stem Rose



Skill Level – Intermediate

This PDF file includes charts, written instructions and photographs for making a long stem rose.

Pattern is written in US terms. Gauge is not important for this project, but you will need a crochet hook appropriate to make firm tight stitches with your yarn chosen.

Materials:

- Crochet hook size 1.5 mm (US size 8/Canadian & UK size 4.5)
- DK (UK) – DK/Light Worsted (USA) - 8 ply (AUS) Yarn in flower colour (cream is shown)
- DK (UK) – DK/Light Worsted (USA) - 8 ply (AUS) Yarn for sepal and leaves (light green and dark green are shown for sepal and leaves)
- 2.0 mm gauge wire (12 gauge US) approx. 10-12" long for stem
- 0.5 mm gauge wire (24 gauge US) approx. 10" for each of the 3 leaves
- Wire cutters
- Scissors
- 30mm Styrofoam ball
- Glue gun and hot glue
- Stitch markers (optional)
- Candle and flame source (if using acrylic yarn)
- Straightener/Flat Iron (optional)
- 1 pkg. 3m x 500mm folded Crepe paper (green) OR Substitute floral tape for crepe paper (optional)
- Green Paper Floral tape

Stitches & Abbreviations:

MR – magic ring

ch – chain

st/sts – stitch/stitches

sl st – slip stitch

sc – single crochet

hdc – half-double crochet

dc – double crochet

tr – treble crochet

2-sc inc – 2 single crochet in same stitch

2-hdc inc – 2 half double crochet in same stitch

2-dc inc – 2 double crochet in same stitch

3-dc inc – 3 double crochet in same stitch

sc 2 tog – single crochet 2 stitches together

Notes:

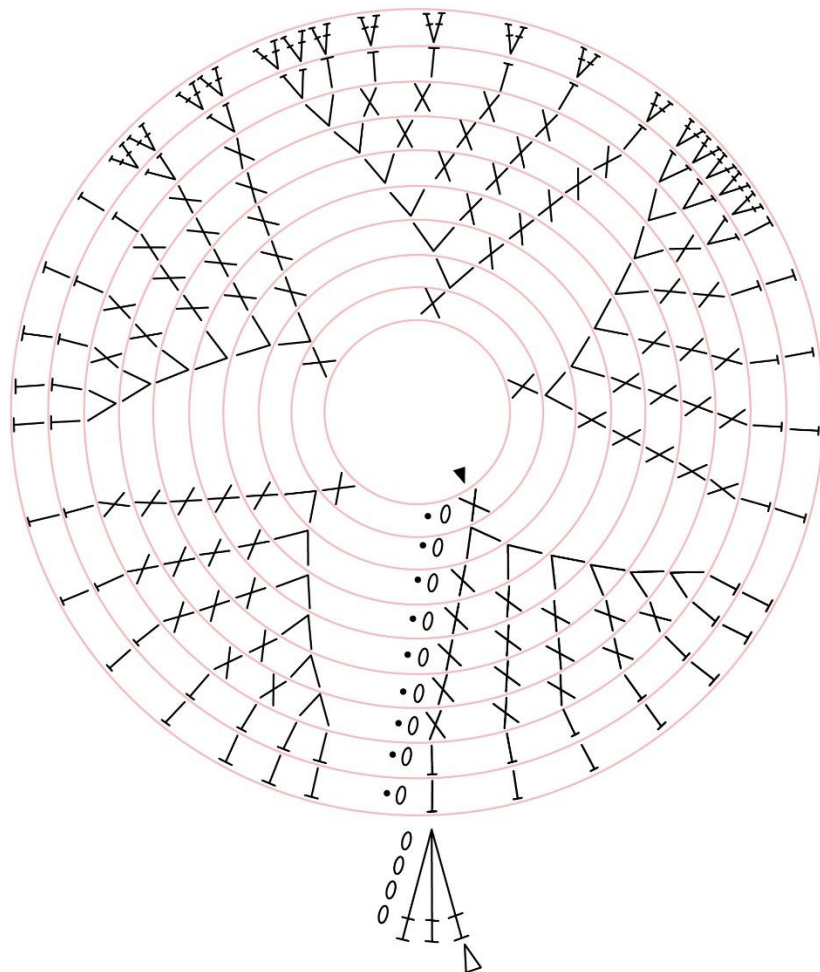
Making 3D crochet projects is more difficult than your usual crochet projects. This project is suitable for an Intermediate skill level.

You will also need to know how to begin with a **magic ring**.

Magic Ring: Make a loop with your yarn. Holding the loop with your fingers, insert the hook into the loop and pull the yarn through the loop on the hook. Now work your stitches into the loop and simply pull the tail end of the yarn to draw up the ring.

There are many online tutorials if this is a new technique for you.

Outside Petal Chart



STITCH LEGEND

▲	Start	T	Half Double Crochet (hdc)
△	Cut	V	2 Single Crochet Into Same Stitch (2-sc inc)
•	Slip Stitch (sl st)	V	2 Half Crochet Into Same Stitch (2-hdc inc)
0	Chain (ch)	V	2 Double Crochet Into Same Stitch (2-dc inc)
X	Single Crochet (sc)	V	3 Double Crochet Into Same Stitch (3-dc inc)

Outside Petal Instructions

Outside Petal: Make 4 (if making the larger rose, otherwise skip to the Inside Petals)

Color: Flower color (cream shown)

Foundation: Magic Ring, ch 1, 5 sc in MR, pull tail tight, sl st in 1st sc to join (5 sts)

Round 1: ch 1, 2-sc inc in next st & each st around, sl st in 1st sc of round to join (10 sts)

The first st in each round will be done in the joining sl st from the previous round. Repeats in each round will be phrased to say "in next st". This does not apply to the first st of the round.
--

Round 2: ch 1, [sc in next st, 2-sc inc in next st] 5x, sl st in 1st sc of round to join (15 sts)

Round 3: ch 1, [sc in next 2 sts, 2-sc inc in next st] 5x, sl st in 1st sc of round to join (20 sts)

Round 4: ch 1, [sc in next 3 sts, 2-sc inc in next st] 5x, sl st in 1st sc of round to join (25 sts)

Round 5: ch 1, [sc in next 4 sts, 2-sc inc in next st] 5x, sl st in 1st sc of round to join (30 sts)

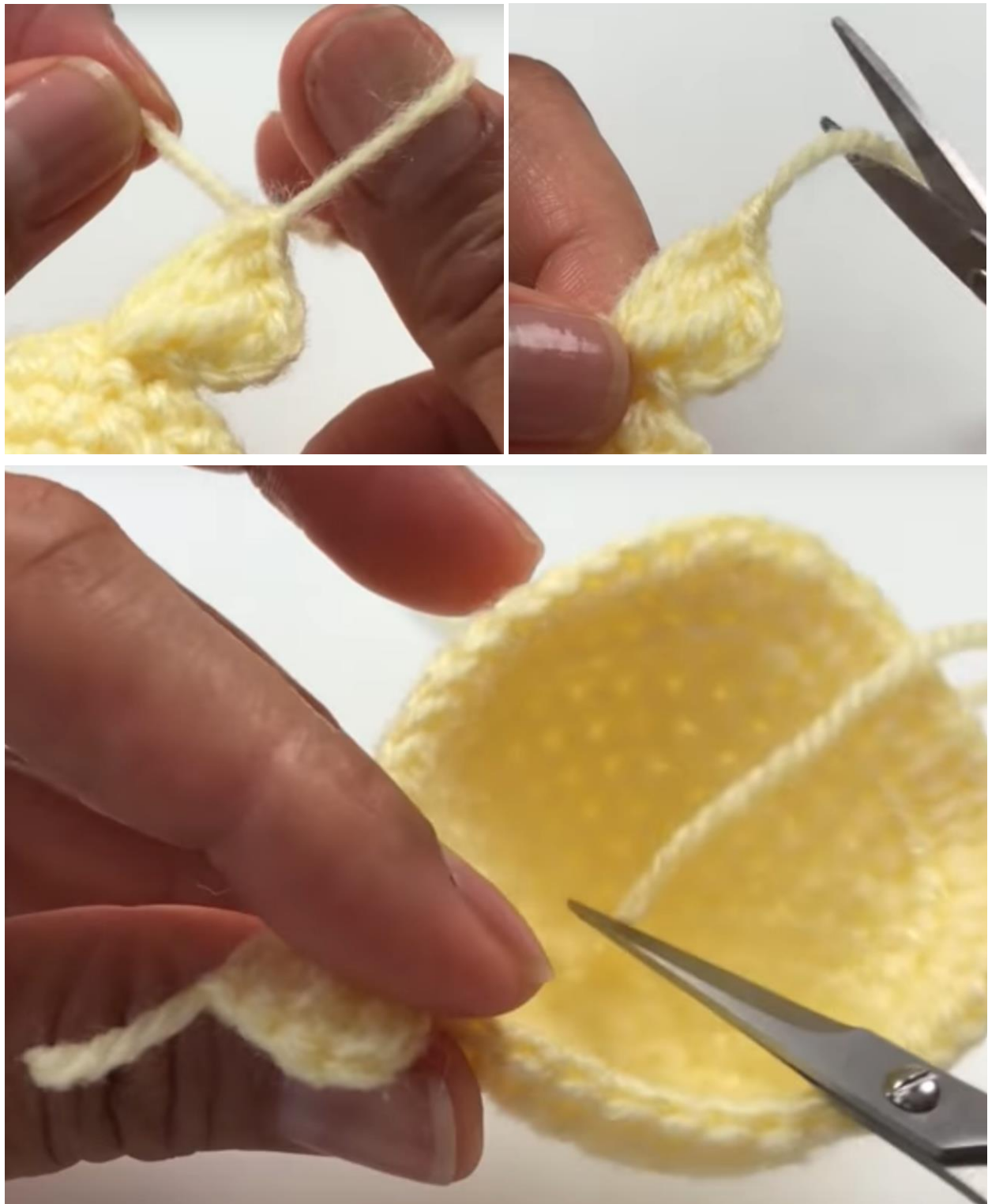
Round 6: ch 1, [sc in next 5 sts, 2-sc inc in next st] 5x, sl st in 1st sc of round to join (35 sts)

Round 7: ch 1, hdc in joining sl st of R6 and next 10 sts, 2-hdc inc in next 3 sts, hdc in next 6 sts, 2-hdc inc in next 3 sts, hdc in next 12 sts, sl st in 1st hdc to join (41 sts)

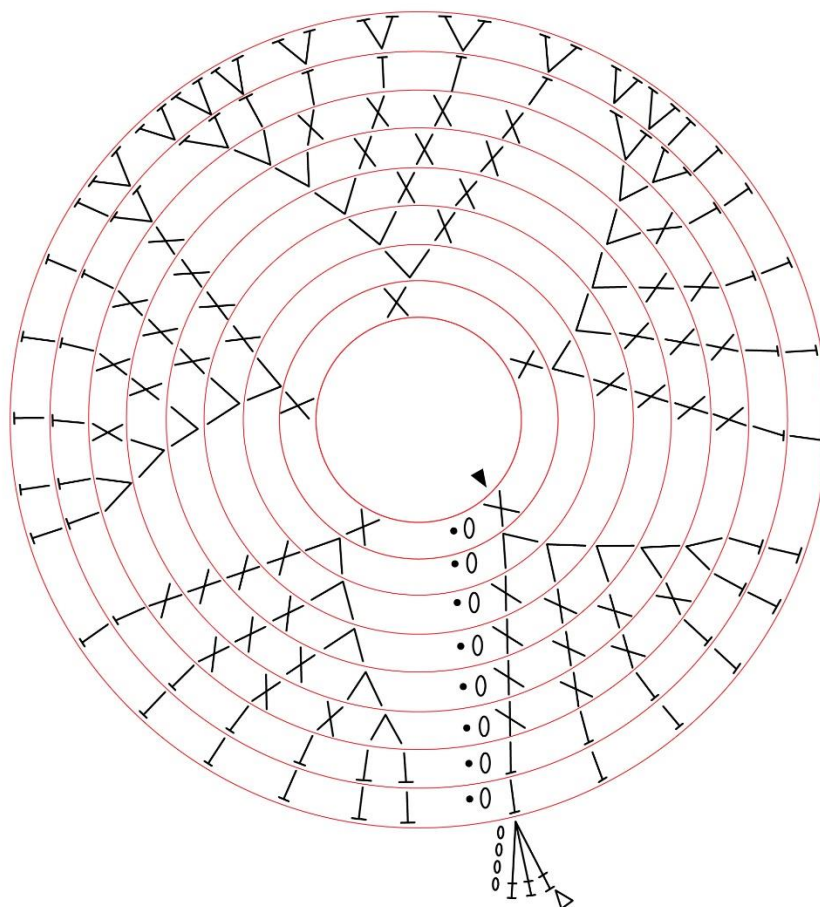
Round 8: ch 1, hdc in joining sl st of R7 and next 11 sts, 2-dc inc in next 17 sts, hdc in next 12 sts, sl st in 1st hdc to join (58 sts)

Tab: ch 4, 3-dc inc in next st

Finish off, leaving a 1" yarn tail. Trim starting tail so that it is almost flush with the back side of the petal



Inside Petal Chart



STITCH LEGEND

▲	Start	T	Half Double Crochet (hdc)
△	Cut	V	2 Single Crochet Into Same Stitch (2-sc inc)
•	Slip Stitch (sl st)	∇	2 Half Crochet Into Same Stitch (2-hdc inc)
0	Chain (ch)	∇∇	2 Double Crochet Into Same Stitch (2-dc inc)
X	Single Crochet (sc)	∇∇∇	3 Double Crochet Into Same Stitch (3-dc inc)

Inside Petal Instructions

Inside Petal: Make 4

Color: Flower color (cream shown)

Foundation: Magic Ring, ch 1, 5 sc in MR, pull tail tight, sl st in 1st sc to join (5 sts)

Round 1: ch 1, 2-sc inc in next st & each st around, sl st in 1st sc of round to join (10 sts)

The first st in each round will be done in the joining sl st from the previous round. Repeats in each round will be phrased to say "in next st". This does not apply to the first st of the round.
--

Round 2: ch 1, [sc in next st, 2-sc inc in next st] 5x, sl st in 1st sc of round to join (15 sts)

Round 3: ch 1, [sc in next 2 sts, 2-sc inc in next st] 5x, sl st in 1st sc of round to join (20 sts)

Round 4: ch 1, [sc in next 3 sts, 2-sc inc in next st] 5x, sl st in 1st sc of round to join (25 sts)

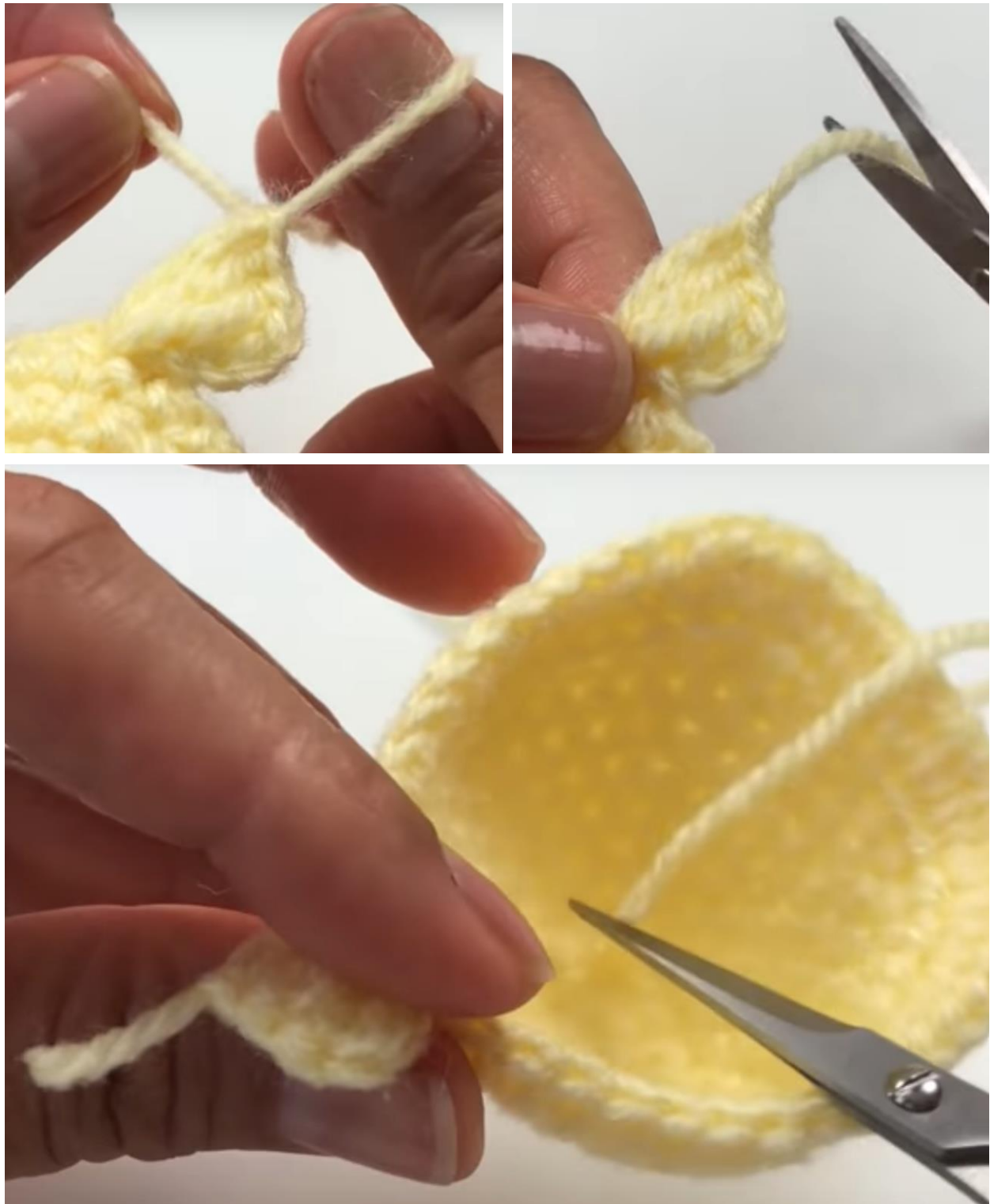
Round 5: ch 1, [sc in next 4 sts, 2-sc inc in next st] 5x, sl st in 1st sc of round to join (30 sts)

Round 6: ch 1, hdc in joining sl st of R5 and in next 9 sts, 2-hdc inc in next 2 sts, hdc in next 5 sts, 2-hdc inc in next 2 sts, hdc in next 11 sts, sl st in 1st hdc to join (34 sts)

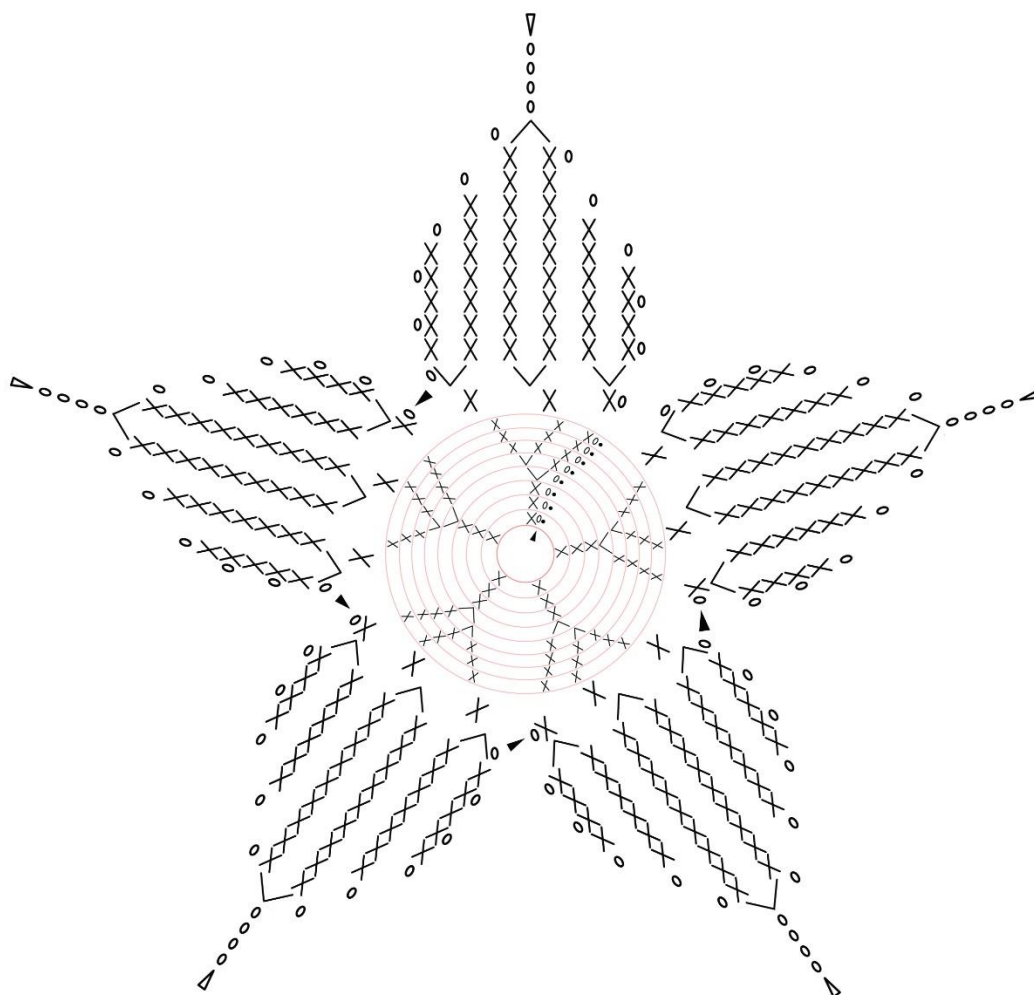
Round 7: ch 1, hdc in joining sl st of R6 and next 11 sts, 2-hdc inc in next 10 sts, hdc in next 12 sts, sl st in 1st hdc to join (44 sts)

Tab: ch 4, 3-dc inc in next st

Finish off, leaving a 1" yarn tail. Trim starting tail so that it is almost flush with the back side of the petal



Sepal Chart



STITCH LEGEND

▲	Start	T	Half Double Crochet (hdc)
△	Cut	V	2 Single Crochet Into Same Stitch (2-sc inc)
•	Slip Stitch (sl st)	∇	2 Half Crochet Into Same Stitch (2-hdc inc)
0	Chain (ch)	∇∇	2 Double Crochet Into Same Stitch (2-dc inc)
X	Single Crochet (sc)	Λ	Single Crochet Together (sc2tog)

Sepal Instructions

Sepal: Make 1

Color: Sepal color (dark green and light green shown)

Foundation: Magic Ring, ch 1, 5 sc in MR, pull tail mostly tight (you should be leaving an opening large enough for the stem to fit through at assembly), sl st in 1st sc to join (5 sts)



Leave the tail in the back of the Foundation round so that as you work the Round 1 and Round 2 the tail will be inside of the work

While working Round 1 and Round 2 it may feel awkward or challenging. This is normal when working with a small number of sts.

Round 1: ch 1, sc in next st & each st around, sl st in 1st sc of round to join (5 sts)

Round 2: repeat Round 1

Round 3: ch 1, 2-sc inc in joining sl st of Round 2 and each st around, sl st in 1st sc of round to join (10 sts)

Round 4: ch 1, sc in joining sl st of Round 3, [2-sc inc in next st, sc in next st] 4x, 2-sc inc in next st, sl st in 1st sc of round to join (15 sts)

Round 5: ch 1, sc in joining sl st of Round 3 and each st around, sl st in 1st sc of round to join (15 sts)

Round 6-7: repeat Round 5 (15 sts)

Do not cut yarn or finish off. Keep the current st on the hook and ready to move on to the sepal leaves



The Sepal has 5 leaves coming off of the center. Each leaf will be worked individually in rows. This means that the yarn will be cut at the tip of each leaf and picked up at the center to start the next leaf. The 1st leaf is the exception as it will just continue from the yarn used to make Round 7.

Sepal Leaf Pattern: Repeated 5 times

Row 1: ch 1, sc in the same st as the ch and the next 2 sts, turn work (3 sts)

Row 2: ch 1, 2-sc inc in the next 3 sts, turn work (6 sts)

Row 3: ch 1, sc in the next 6 sts, turn work (6 sts)

Rows 4-6: repeat Row 3

Row 7: ch 1, skip first st, sc in 2nd st and next 4 sts, turn work (5 sts)

Row 8: ch 1, skip first st, sc in 2nd st and next 3 sts, turn work (4 sts)

Row 9: ch 1, skip first st, sc in 2nd st and next 2 sts, turn work (3 sts)

Row 10: ch 1, skip first st, sc in 2nd st and next st, turn work (2 sts)

Row 11: ch 1, sc in next 2 sts, turn work (2 sts)

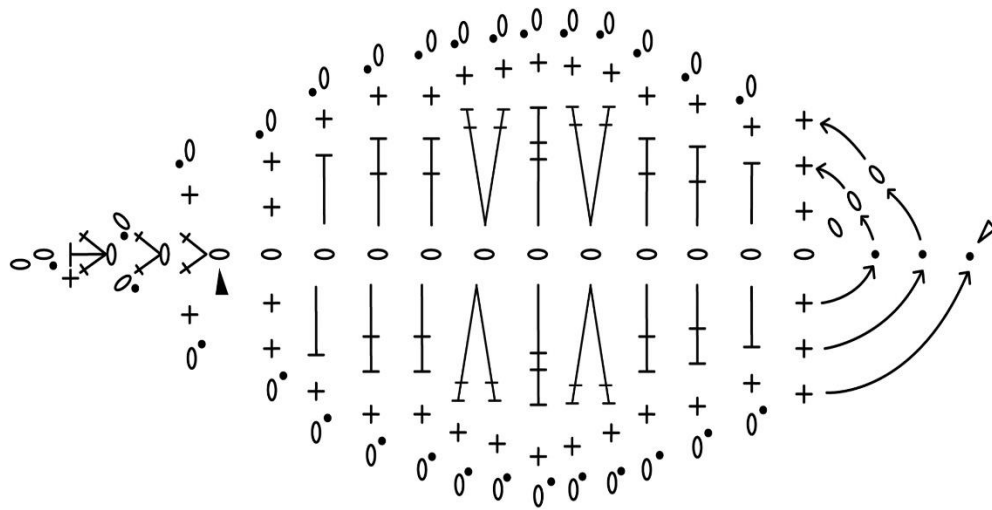
Row 12: ch 1, sc2tog in next 2 sts (1 st)

Ch 4, finish off leaving a yarn tail of 3" at the end of each sepal leaf

After making the first leaf, the yarn will need to be picked up at the center to make the next leaf until all 5 leaves are made. To pick up the yarn and start the next leaf, insert the hook through the next st of R7 after the previous leaf. Wrap the yarn around the hook and pull through as normal, holding the tail behind the work. You can hold this tail along R7 and work Row 1 of the Sepal Leaf pattern around it to secure it



Rose Leaf Chart



STITCH LEGEND

▲	Start	T	Half Double Crochet (hdc)
△	Cut	X	2 Single Crochet Into Same Stitch (2-sc inc)
•	Slip Stitch (sl st)	⏏	Treble Crochet (tr)
0	Chain (ch)	≡	2 Double Crochet Into Same Stitch (2-dc inc)
X	Single Crochet (sc)	⏏	Double Crochet (dc)

Rose Leaf Instructions

Rose Leaf: Make 3

Color: Leaf color (light green shown)

Foundation: Slip knot (leave a 1" tail), ch 13

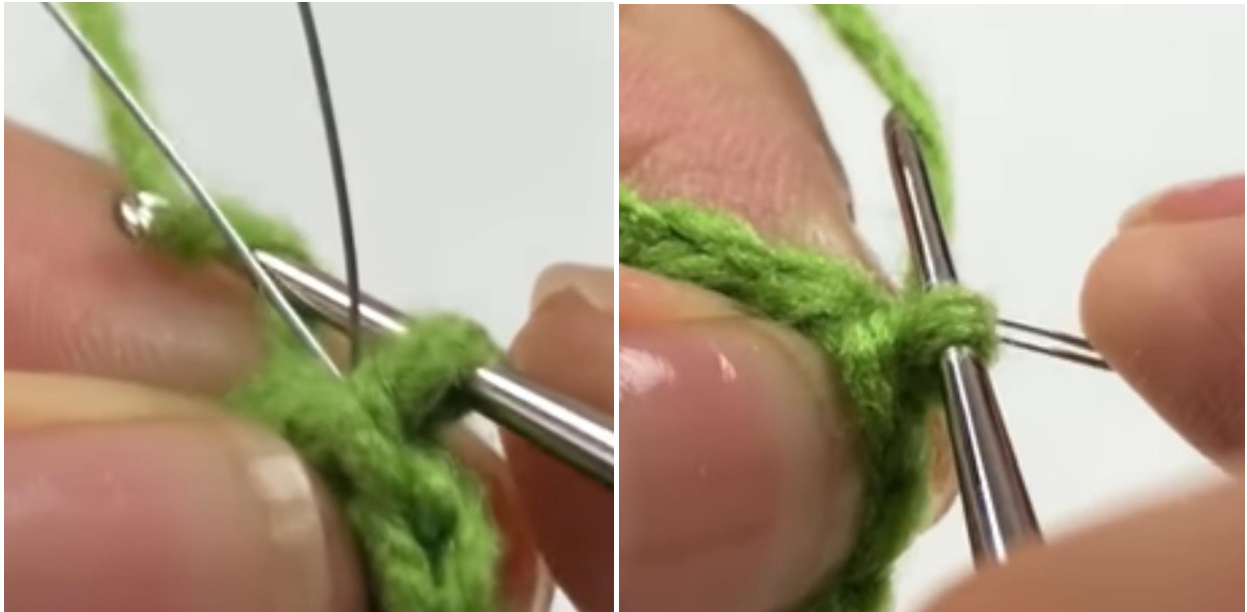
Round 1: sc in 2nd ch from hook, hdc in next ch, dc in next 2 chs, 2-dc inc in next ch, tr in next ch, 2-dc inc in next ch, dc in next 2 chs, hdc in next ch, sc in next ch, (sc, ch 1 [place marker if using], sc) in last ch, rotate leaf (hold tail along the chain and wrap the sts down the 2nd side of the leaf around the tail), sc in next ch, hdc in next ch, dc in next 2 chs, 2-dc inc in next ch, tr in next ch, 2-dc inc in next ch, dc in next 2 chs, hdc in next ch, sc in next ch, sl st in last ch (place marker if using)

Insert .5 mm (24 Gauge US) wire through st on hook, leaving a 3" tail. Work Round 2 with the loop of every st around the wire



Round 2: ch 1, sc in same space as ch and in next 13 sts, (remove marker if using) (sc, ch 1 [place marker if using], sc) in ch 1 space, sc in next 14 sts, cut wire leaving a 3" tail, hold the yarn behind the wire tails and move the hook in front of the wire tails and sl st in the 1st sc of the round to join

Round 3: ch 1 while holding the hook and the yarn behind the wire tails, move hook in front of wire tails and bend the wire tails out of the way



Round 3 cont.: sc in next st, [ch 1, sl st in next st] 14x, (sc, hdc, ch 2, sl st in 1st ch, pick up 3 loops from hdc and sc through them [pick up shown in picture below], sc) in ch 1 space, [ch 1, sl st in next st] 14x, sc in next st, keep yarn behind wire tails and hook in front of the tails and sl st in 1st sc of round to join



Finishing: Pull both wire tails through the last st before tightening. Wrap the yarn around the wire tails for about 1". Split the wires and place the yarn in between the wires. Twist the wires twice to secure the yarn. Cut the yarn at the twist on two of the leaves. Don't cut the yarn on the 3rd leaf



Assembly

If using Acrylic yarn (if using cotton yarn, skip this step and move on to neatenning the petals): Light the candle and hold each flower part a few inches above (NOT IN) candle flame to let the rising warmth melt the fuzzy stray fibers sticking. Don't get too close to flame or hold the crochet work in one place for long or the yarn may get smoke stained or burnt.



For the leaves, hold the tip of each leaf over the flame very briefly then pinch the ends to form more of a point.



For the sepal, hold the point where the tail attaches to the sepal leaf over the heat while slightly pulling the sepal and tail away from each other. After a few seconds of heat, the tail should pull away from the sepal, leaving a very short tail on the sepal leaf. Repeat for each leaf of the sepal



Neatening the Petals (this step is optional and can be done with any fiber)

Turn on the hair straightener and set it to a medium-high setting. Once warm, clamp the straightener on the petal tips in very **short** burst. If left on for more than a very short amount of time, the straightener can burn the yarn.



Assemble the Leaves



Step 1: Hold the leaf that is still attached to the yarn with the right side facing up (referred to as Leaf 1). Place a second leaf (Leaf 2) on top of Leaf 1, also right side up, meaning the back side of Leaf 2 is touching the right side of Leaf 1. Hold Leaf 2 so that the bottom of Leaf 2 is slightly lower than the bottom of Leaf 1.

Step 2: Wrap the yarn from Leaf 1 around the wire tails of both leaves to secure them together. Continue wrapping until the wrapping around both sets of wire tails is about 1" in length



Step 3: Place the third leaf (Leaf 3) in a similar manner to Leaf 2, with the right side facing the same direction as Leaves 1 & 2 and the bottom of Leaf 3 lower than the bottom of Leaf 2.



Step 4: Wrap the yarn around the wire tails of all 3 leaves until there is about 1-1.5" left to the longest wire tails. Split the wire tails in half and wrap the yarn in between the tails. Twist the tails several times to secure the yarn. Cut the yarn at the wire tails



Step 5: Spread the leaves out as shown



Assemble the Main Stem

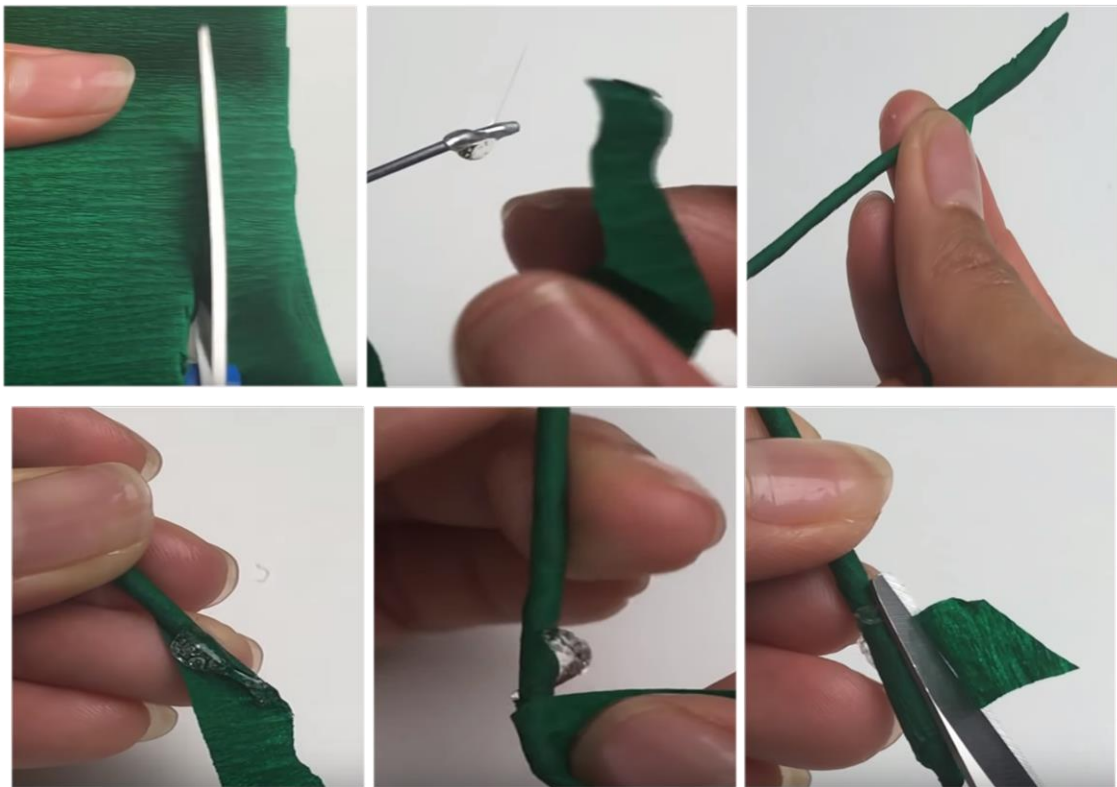
Step 1: Use 1 piece of 1.6mm (14 Gauge US) wire and cut to desired stem length, approx. 12-18"

Step 2: Take the 30mm Styrofoam ball and the wire from Step 1. Push the wire into the ball until the wire is just under or about halfway through the ball (about 15mm). Pull the wire out. There should now be a hole in the Styrofoam ball.

Step 3: (If using floral tape, skip to Step 4) With the crepe paper still folded as packaged, cut perpendicular to the folded edge through all the layers to create a continuous strip about 1" wide. Add a dab of hot glue to one end of the stem wire.

Unfold the strip of crepe paper and adhere one end of the paper to the glue on the wire

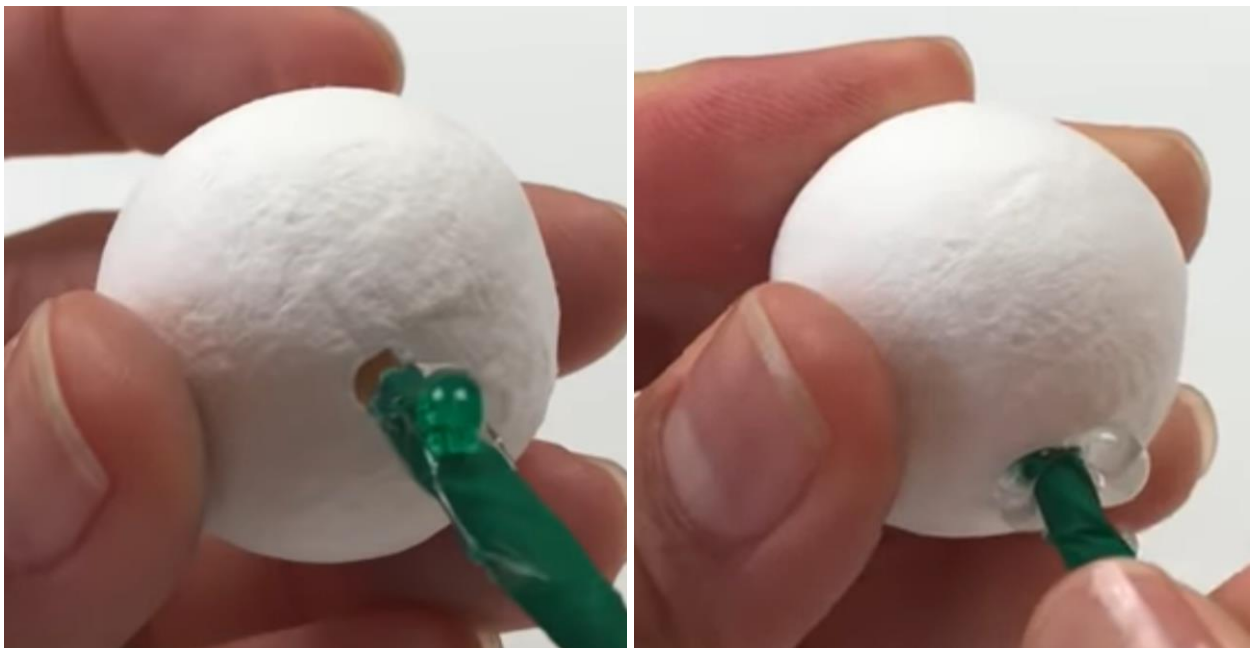
Step 4: Wrap the crepe paper or green floral tape up and down the wire from one end to the other to add even thickness along the wire. Stop when desired thickness is achieved for the stem. Glue down the tail end of the crepe paper or floral tape and snip off any excess



Step 5: Apply a dab of hot glue around the tip of the stem



Step 6: Insert the stem into the hole created in Step 2 to secure the ball to the stem. Set aside



Assemble a Small Rose

Step 1: Hold the main stem with ball at the top and the 4 Inside Petals within reach

Step 2: Hold the 1st Inside Petal (IP1) backside facing you and place a thick line of hot glue on the inside of the petal from about 1/4th of the way up from the bottom of the petal and down to the tab



When placing petals onto the flower, the right side of the petal will face outward from the center of the flower. This means each petal should cup around the center of the flower with the back side of the petal facing inwards toward the center.

Step 3: Place the ball and stem inside IP1 so that the glue secures IP1 to the ball. Pinch the tab around the stem



Step 4: Take the Leaf yarn and wrap it twice around the stem and tab of IP1, through the hot glue. Tie a Figure 4 knot around the stem and tab to secure



Step 5: Apply a line of hot glue along the inside center of IP1 from the top of the ball and up to the tip of the petal. Also apply a dab to the left and right inside tips of IP1. Shown by the blue line and stars



Step 6: Pinch the left and right petal tips together and pinch the center of the petal together. Hold until the glue sets

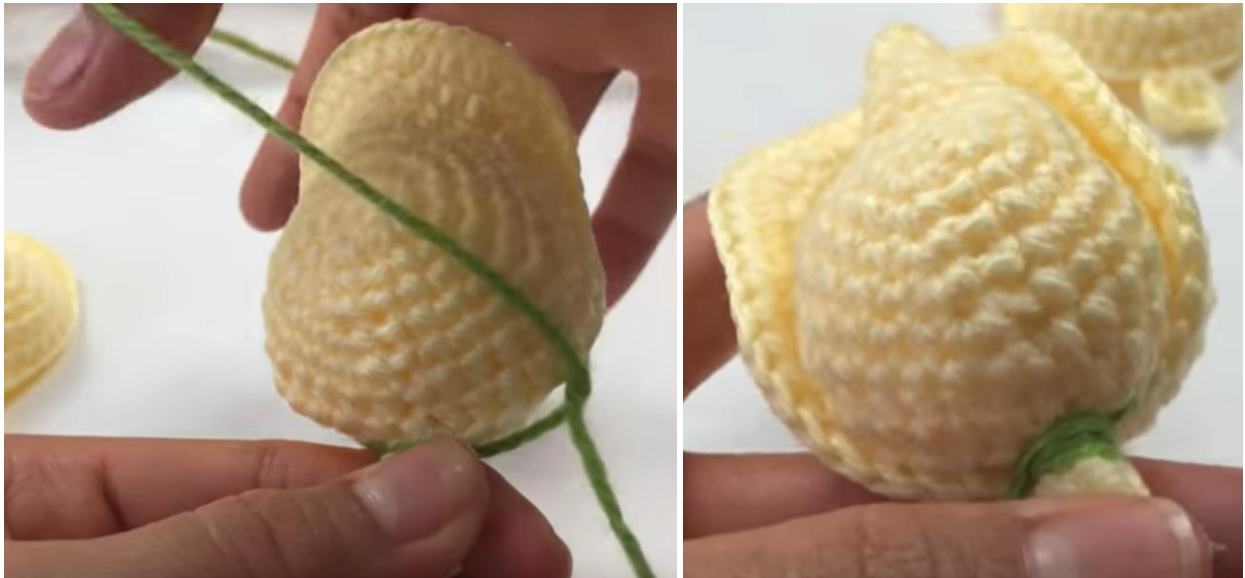


Step 7: Pick up the 2nd Inside Petal (IP2) and place a line of hot glue on the inside of IP2, the same as Step 2

Step 8: With the exposed side of the ball facing up, place IP2, glue side down, onto the ball. Stretch the sides of IP2 around IP1 and hold IP2 in place until glue sets. The ball should no longer be visible



Step 9: Take the leaf yarn and wrap around the full stem and all tabs once and then tie a Figure 4 knot to secure the yarn



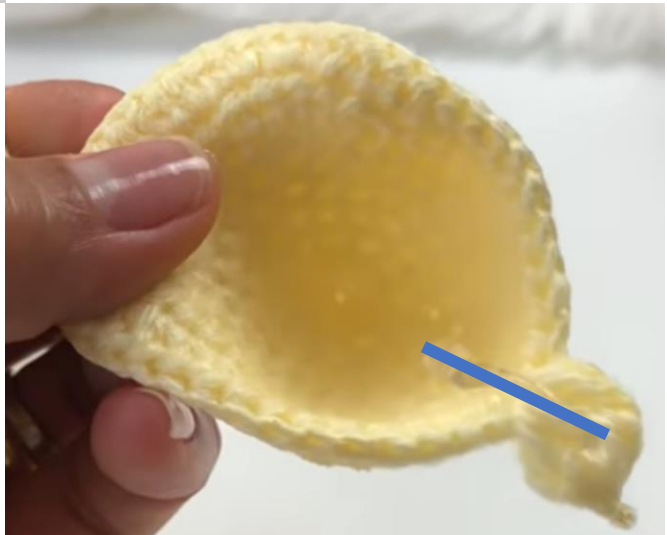
Step 10: With the inside of IP2 facing you, apply a line of hot glue along the inside and left tip of IP2





Step 11: Slightly stretch the left tip of IP2 around IP1 and hold for the glue to set

Step 12: Take the 3rd Inside Petal (IP3) and add a line of hot glue the same way as Step 2



Step 13: With the outside of IP3 facing you, place IP3 so that the left side of IP3 is in line with the center of IP2



Step 14: Wrap and tie the leaf yarn the same way as Step 9

Step 15: With the inside of IP3 facing you, apply a line of hot glue the same as Step 10

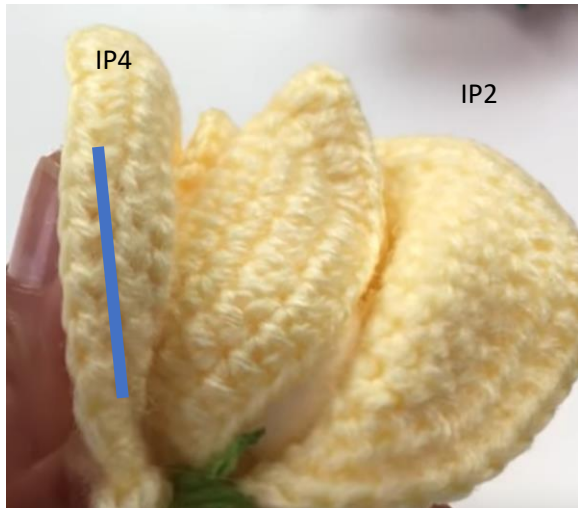


Step 16: Hold the side of IP3 against the flower so that the side of IP3 is in line with the center of IP1

Steps 17: Take the 4th Inside Petal (IP4) and repeat Steps 12 & 13

Step 18: Repeat Steps 15 & 16 so that, with the outside of IP4 facing you, the left side of IP4 lines up with the center of IP3.

Step 19: Pull the unsecured side of IP2 away from the center of the flower. Secure the glued side of IP4 to the center of the flower.



Step 20: Place a line of hot glue down the unsecured side of IP2 and secure it to IP4, so that the edge of IP2 almost reaches the center of IP4



Step 21: Repeat Step 20 to secure IP3 to IP2

Step 22: Repeat Step 20 to secure IP4 to IP3

Step 23: Repeat Step 9

If you are only assembling a small rose, skip to Full Stem and Flower Assembly, otherwise continue to Assemble a Large Rose

Assemble a Large Rose

Step 1: Hold the Small Rose and have the 4 Outside Petals within reach

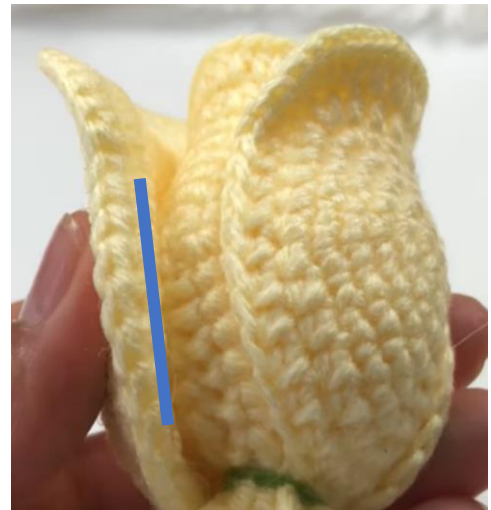
Step 2: Take the 1st Outside Petal (OP1) with the backside facing you and place a thick line of hot glue on the inside of the petal from about 1/4th of the way up from the bottom of the petal and down to the tab





Step 3: With the edge of one of the petals on the Small Rose facing up, place OP1 on the rose. The edge of OP1 should line up with the edge of one of the Inside Petals. Hold until the glue sets

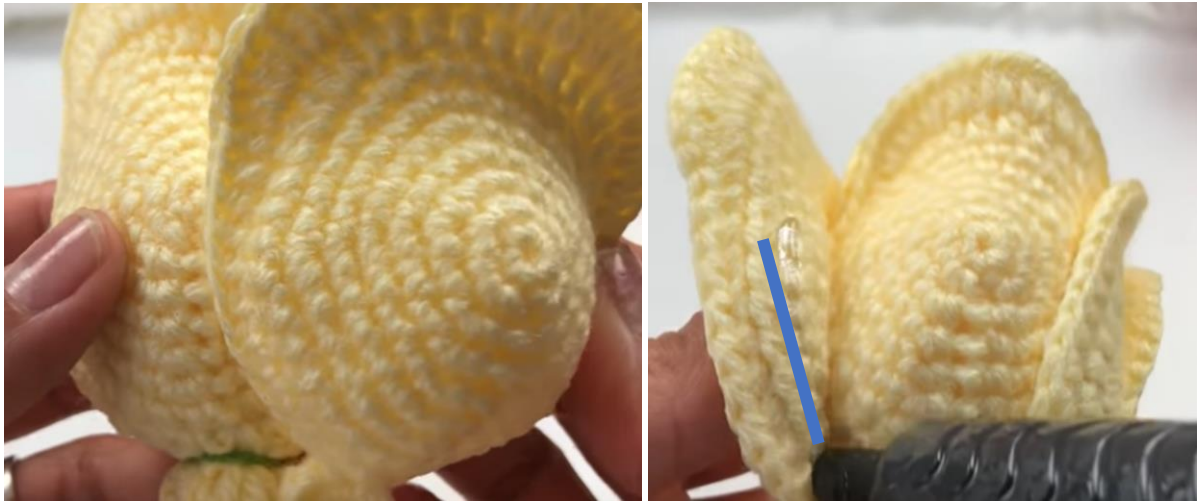
Step 4: With the inside of OP1 facing you, apply a line of hot glue along the inside and left tip of OP1



Step 5: Take the Leaf yarn and wrap it around all tabs. Tie a Figure 4 knot around the stem and tab to secure



Step 6: Take the 2nd Outside Petal (OP2) and repeat Steps 2-5 with the left tip of OP2 in line with the center of OP1 and securing the opposite tip of OP2 to the Small Rose



Step 7: Take the 3rd Outside Petal (OP3) and repeat Steps 2-5 with the left tip of OP3 in line with the center of OP2 and securing the opposite tip of OP3 to the Small Rose



Step 8: Pull the unsecured edge of OP1 away from the center of the flower

Steps 9: Take the 4th Outside Petal (OP4) and repeat Steps 2-4 with the left tip of OP4 in line with the center of OP3 and securing the opposite tip of OP4 to the Small Rose. This tip should line up with the tip of one of the Inside Petals



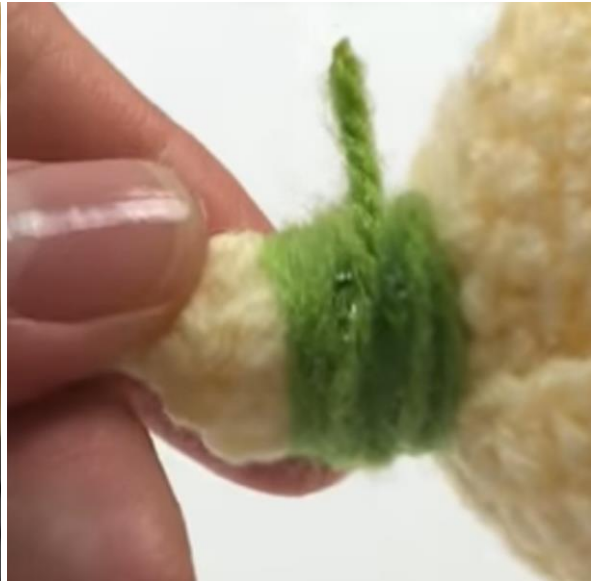


Step 10: Apply a line of hot glue along the pulled away tip of OP1 and secure to OP4. Ensure that the line of glue goes down as close to the bottom center of OP1 as possible

Step 11: Repeat Step 10 along the unsecured tip of OP2 and secure OP2 to OP1

Step 12: Repeat Step 11 to secure OP3 to OP2 and OP4 to OP3

Step 13: Wrap the leaf yarn around all tabs about 10 times, moving down the tabs slightly. Apply a dab of hot glue on top of the wrapped yarn and wrap the yarn twice more through the glue. Cut the yarn



Full Stem and Flower Assembly

Step 1: Hold the Sepal with the right side up and insert the tip of the main stem with the rose on the other end into the hole in the bottom of the Sepal



Step 2: Slide the Sepal up the stem to until it is almost at the bottom of the Rose

Step 3: Place 3 dabs of hot glue around the yarn wrapped around the base of the Rose





Step 4: Slide the Sepal up to meet the bottom of the Rose and hold until the glue sets

Step 5: Apply a line of hot glue along the center of one of the Sepal leaves



Step 6: Hold the Sepal leaf straight up and against the rose until the glue sets

Step 7: Repeat Steps 5 & 6 for the remaining 4 Sepal leaves



Step 8: Start wrapping the floral tape right below the bottom of the Sepal

Step 9: After wrapping about 3-4", place the Leaf Assembly along the stem with the right side facing in towards the rose and stem and continue wrapping the floral tape around both the stem and the tail of the Leaf Assembly until the tail is fully covered



Step 10: Wrap the rest of the stem in the floral tape. Break off the tap and secure it to the end of the stem

Step 11: Bend the Leaf Assembly away from the stem

Note: The same yarn that was used for the Sepal and Leaves can also be used to wrap the stem instead of the floral tape. If using yarn, secure it at the bottom of the Sepal by holding a short tail along the stem and moving up towards the bottom of the Sepal. Start the wrapping at the bottom of the Sepal around both the stem and this short yarn tail. This will secure the yarn after a few wraps. Wrap in the same manner as the floral tape, being careful to keep the wrapping consistent all the way down so the stem width is smooth and even all the way down. Secure with a dab of hot glue at the end of the stem.





You can find me here



<https://natagorfinlayson.com/>



<https://www.instagram.com/natagorfinlayson/>



<https://www.facebook.com/NatagorFinlaysonCrochet>



<https://www.pinterest.co.uk/natagorfinlayson/>

Copyright & Terms of Use

This crochet flower pattern is my own and original design and is therefore copyrighted. I ask that you don't resell, redistribute, copy or rewrite any content within this pdf file, including pattern charts and photos.